

## Peartree Hill Solar Farm

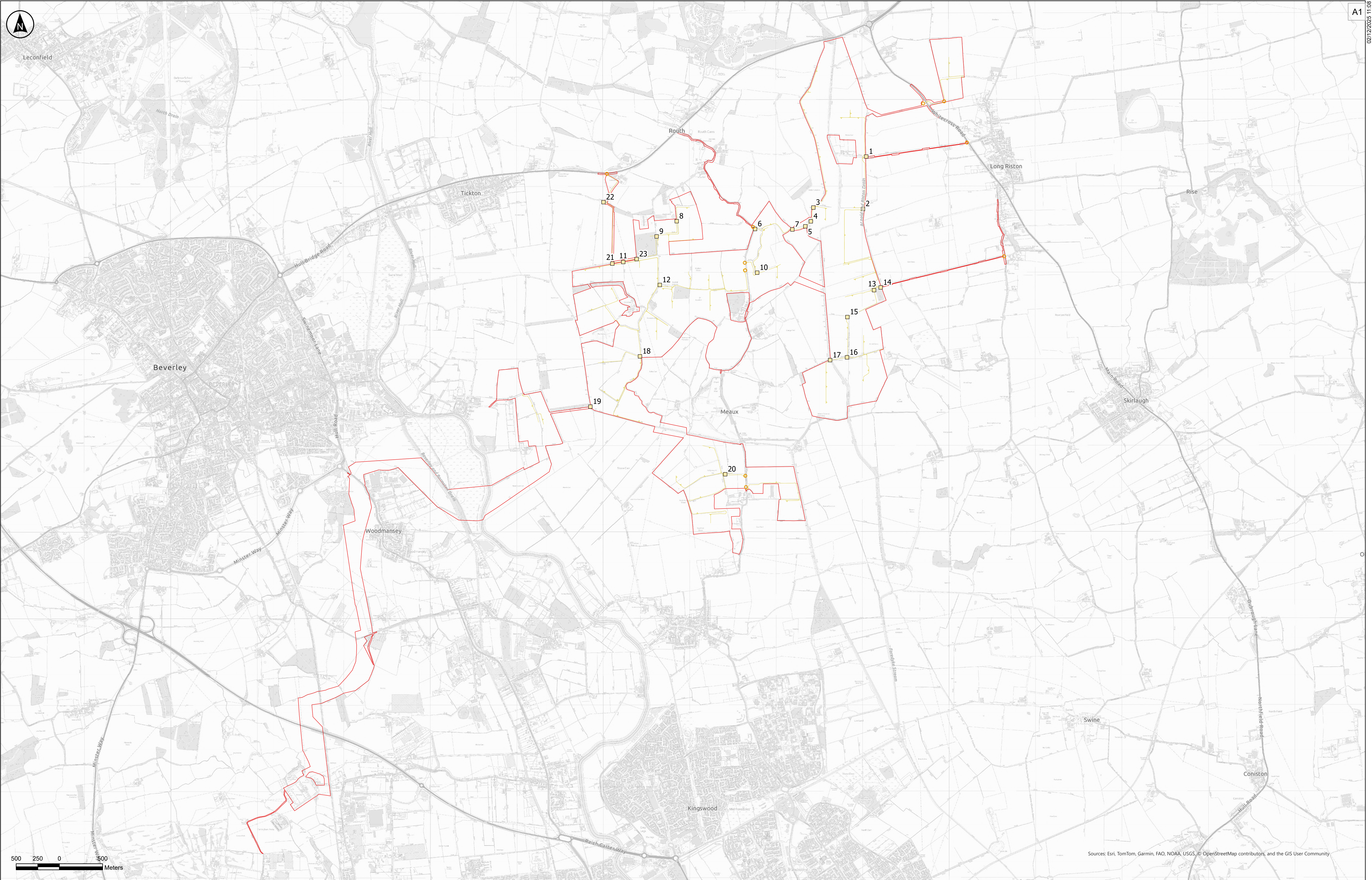
### Environmental Statement

#### Volume 3

#### Figure 3.6: Indicative Culvert Crossing Points

#### Revision 3





Sources: Esri, TomTom, Garmin, FAO, NOAA, USGS, © OpenStreetMap contributors, and the GIS User Community

Sources: Esri, TomTom, Garmin, FAO, NOAA, USGS, © OpenStreetMap contributors, and the GIS User Community

**Key**

- Order Limits
- Construction Access Points
- Internal Access Tracks
- Proposed Culvert / Span Bridge

**Notes:**

1. This drawing is for illustrative purposes only

P04	02/12/2025	NAM	EH	AD	MG
Rev	Date	By	Chkd	Appd	Authd

Client

**RWE**

Project Name

Peartree Hill Solar Farm

Drawing Title

Environmental Statement Volume 3, Figure 3.6: Indicative Culvert Crossing Points and Span Bridges

Scale at A1

1:20,000

Status

DCO Application

Infrastructure Planning (Applications: Prescribed Forms and Procedure) Regulations 2009: SI(2)(a)

PINS Number

EN/010157/APP/6/3

Coordinate System

British National Grid

Rev

P04



**RWE Renewables UK Limited**

Windmill Hill Business Park,  
Whitehill Way,  
Swindon,  
Wiltshire,  
England,  
SN5 6PB  
[www.rwe.com](http://www.rwe.com)